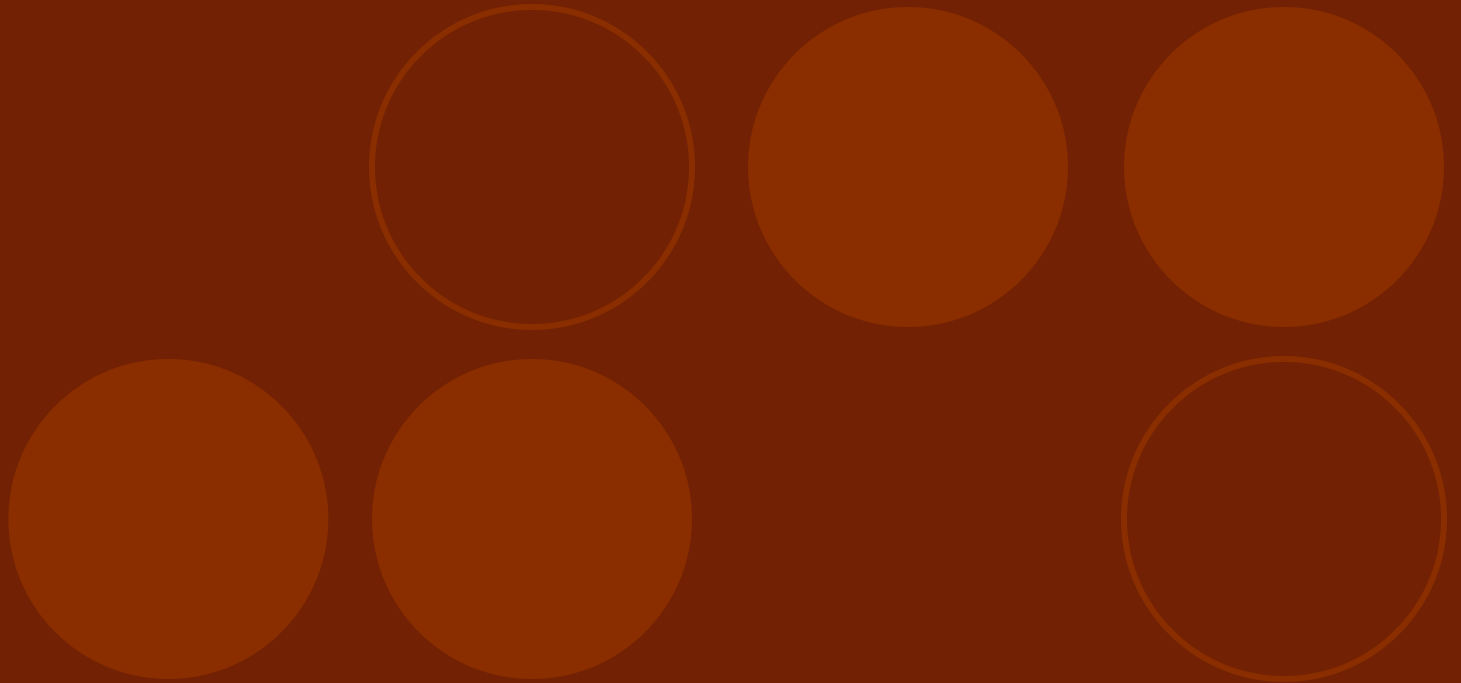


# Personal Protective Equipment



John Hillard  
Safety Coordinator  
Giorgi Mushroom Company

# Personal Protective Equipment (PPE)

## Defined

Personal Protective Equipment includes items worn or used by your employees to protect them from known or possible hazards associated with performing a job. PPE shields the employee from the hazard. Examples are gloves for chemical applications, safety helmets, safety glasses and respirators.



# Personal Protective Equipment

## Misconceptions

- ~ “Just throw it on them”
- ~ “How much training does it take to put on safety glasses? Respirator? Ear plugs?”
- ~ “More is better than not enough”
- ~ “I am exempt from the OSHA requirement because of FIFRA. FIFRA says the label is the law.”
- ~ “I think that is a hazard and PPE is THE answer.”

# Personal Protective Equipment

## Start...at the Start

~ JSA's are the foundation

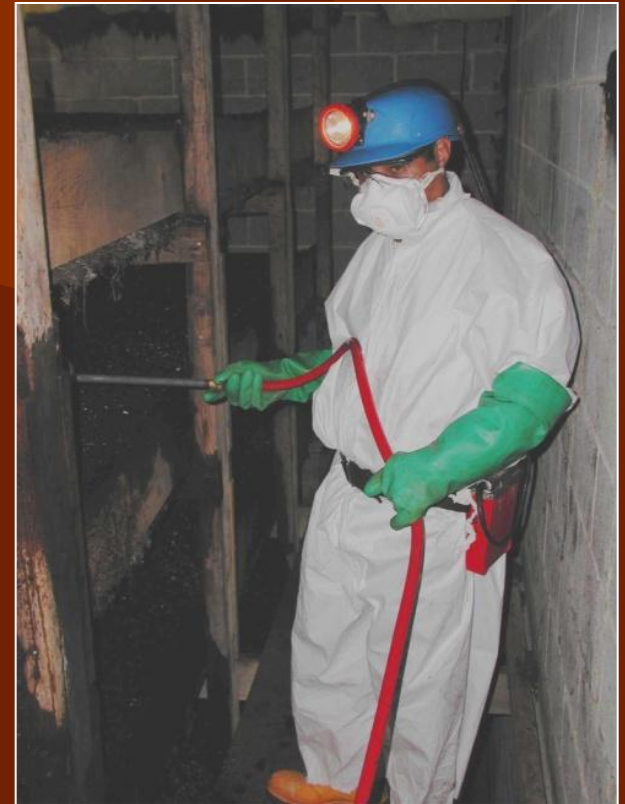
- Analyze the job
- Identify the hazard\*
- Eliminate the hazard
- Re-evaluate the job



# Personal Protective Equipment

## Start...at the Start

- ~ EXAMPLE – Waterman
  - Analyze the job – JSA
  - Identify the hazard – JSA
  - Eliminate the hazard
  - Re-evaluate the job



# Personal Protective Equipment

## Start...at the Start

### EXAMPLE # 2 – Spawning Crew

- Analyze the job – JSA
- Identify the hazard – JSA\*
- Eliminate the hazard
- Re-evaluate the job



# Personal Protective Equipment

## PPE is not always the answer

- ~ Eliminate the hazard
  - Engineering Controls
  - Eliminate the task
- ~ Control the hazard
  - Guardrails
- ~ Safe working practices
- ~ PPE should be considered LAST

# Personal Protective Equipment

## How do I decide what to use

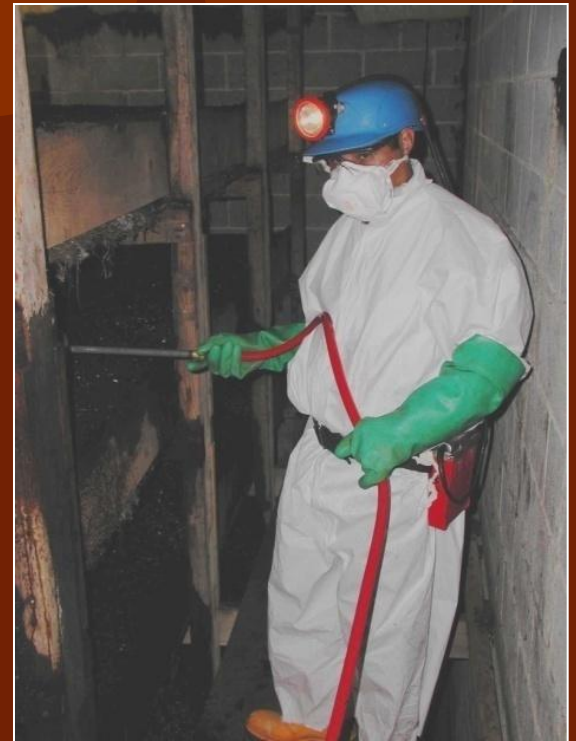
- ~ Follow the standard:
  - MSDS's
  - Chemical Label
  - OSHA, NFPA and ANSI Standards
- ~ If standards conflict
  - **USE MOST STRINGENT GUIDELINES**



# Personal Protective Equipment

## How do I decide what to use (cont)

- ~ After the standards, look elsewhere:
  - Manufacturer's Suggestion
  - Look at your JSA
  - Ask for employee input\*
  - Industry best practices



# Personal Protective Equipment

## Considerations when choosing PPE

- ~ Employee Comfort and Preference:
  - Who wants to wear uncomfortable equipment
  - Give them options\*
  - Ask for their input
- ~ Durability and Ruggedness
  - Frequency of use
  - How is it used
  - How your employees handle it





# Personal Protective Equipment

## Creating Your PPE Program

~ JSA's

- Perform JSA's for all jobs
- Keep Completed JSA's with your PPE program
- Update JSA's when you have a new job or are changing a current job.
- List jobs and the PPE required to perform it

# Personal Protective Equipment

## Creating your PPE Program (Cont)

### ~ Select Appropriate PPE

- Compare brands
- Speak with employees
- Talk to other companies about what they use
- Some vendors may offer training

# Personal Protective Equipment

## Creating your PPE Program (Cont)

### ~ Training

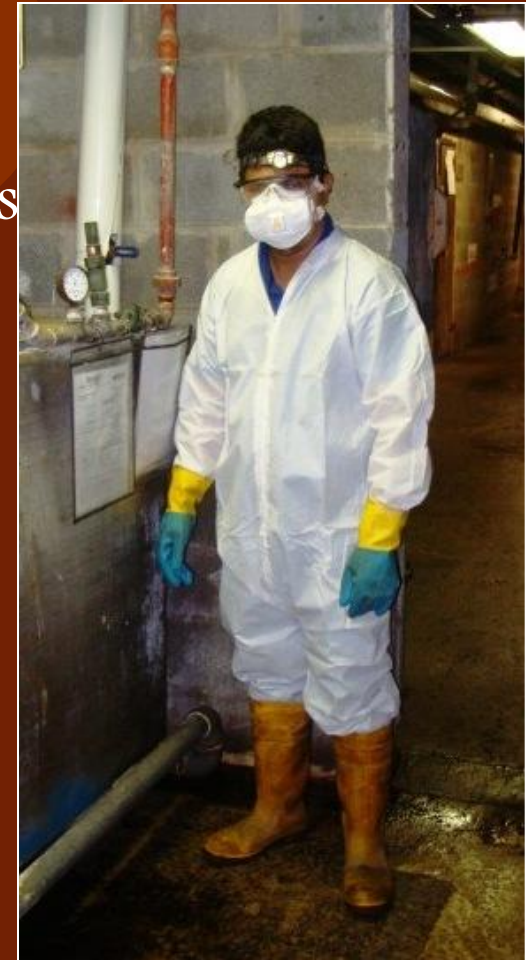
- Conduct training specific to each employee's job
- Explain procedures to replace PPE
- Explain procedures to store and care for PPE
- DOCUMENT, DOCUMENT, DOCUMENT
- Use this documentation to issue discipline

# Personal Protective Equipment

## Creating Your PPE Program (Cont)

### Auditing:

- EVERY TIME you see an employee us
- Are they wearing PPE correctly?\*

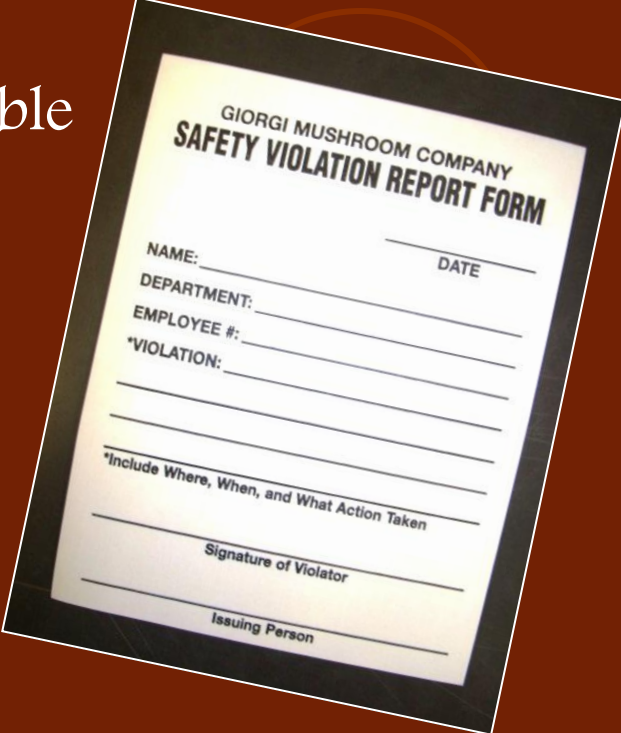


# Personal Protective Equipment

## Creating Your PPE Program (Cont)

### Auditing:

- Discipline employees failing to comply.\*
- Document audits as often as possible



GIORGI MUSHROOM COMPANY  
**SAFETY VIOLATION REPORT FORM**

NAME: \_\_\_\_\_ DATE \_\_\_\_\_

DEPARTMENT: \_\_\_\_\_

EMPLOYEE #: \_\_\_\_\_

\*VIOLATION: \_\_\_\_\_  
\_\_\_\_\_  
\_\_\_\_\_

*\*Include Where, When, and What Action Taken*

\_\_\_\_\_  
Signature of Violator

\_\_\_\_\_  
Issuing Person



# Personal Protective Equipment

## Creating Your PPE Program (Cont)

### ~ Additional details

- Respirators and SCBA's are considered PPE, BUT there are additional steps not in the PPE standard.
- Discipline must be frequent, consistent and documented
- Inventory of PPE should include equipment model numbers
- Update the JSA and PPE program if you eliminate the necessity of PPE through engineering controls.



If you think Personal Protective Equipment  
and the program that should be created  
for it are too expensive,  
imagine the cost of an injury or illness.



John Hillard Thanks You